

2025 CHEST WALL INJURY SUMMIT

April 23 – 26, 2025

Westin Peachtree Plaza | Atlanta, GA

SCAN QR CODE
FOR ONLINE SYLLABUS



THURSDAY APRIL 24

7:00 AM	REGISTRATION OPENS
7:00 AM	Welcome Back Breakfast (All Participants)
8:15 AM	Welcome Thomas W. White, MD, FACS, CNSC
8:30 AM	Donald Trunkey Keynote Address Joseph V. Sakran, MD, MPH, MPA <i>Introduction:</i> Babak Sarani, MD, FACS, FCCM
9:00 AM	Sternal Fixation Guideline Status Update Zachary M. Bauman, DO, MHA, FACOS, FACS
9:15 AM	Basics of Non-invasive Ventilation and the Applicability of These Interventions for Patients with Rib Fractures Dwayne Free, RRT, RCP
9:30 AM	Transitions #1 John M. Green, MD, FACS
9:45 AM	BREAK
10:15 AM	Grassroots Orthopedics Techniques: How I do things in 5 min + Q&A <i>Moderator:</i> David J. Weatherby, MD, FRCSC Reduction Robert D. Wojahn, MD Contouring David J. Weatherby, MD, FRCSC Compression Humza S. Shaikh, MD Bridging Christopher Spering, MD, PhD
11:15 AM	William B Long III Award Presentation and Recipient Remarks
11:30 AM	William B Long III Award Recipient Lecture TBA
11:45 AM	INDUSTRY LUNCH & LEARNS
1:00 PM	Poster Walk-about
1:45 PM	COMMITTEE MEETINGS (Open to all participants) Senior Leadership Babak Sarani, MD, FACS, FCCM; Feroze Sidhwa, MD, MPH, FACS; Evert A. Eriksson, MD, FACS, FCCM, FCCP; Stefan Schulz-Drost, MD, PhD, FEBS Membership Committee Mark A. Kryskow, DO, FACS; John G. Edwards, MB ChB PhD FRCS(C/Th) Publications Committee Susan Kartiko, MD, PhD, FACS; Kaushik Mukherjee, MD, MBA, MSCI, FACS Research Committee Mathieu M.E. Wijffels, MD, PhD Development Committee Dale Butler, MD, MBA, FACS Database Committee Gregory R. Semon, DO, FACOS, FACS Patient Education Work Group Melissa Webb, B.Physio, M.Hlth Sci Education Committee Joseph D. Forrester, MD, MSc, FAWM, FACS
2:45 PM	BREAK
3:15 PM	Frankenplating <i>Moderators:</i> Mark A. Kryskow, DO, FACS; Zachary D. Warriner, MD, FACS <i>Panel members:</i> Adam J. Kaye, MD, MHA, FACS; Andrew R. Doben, MD, FACS; Gina R. Shirah, MD, FACS; Kurt A. Martinson, MD, FACS ; Sebastian D. Schubl, MD, FACS Interdisciplinary Team Discussion <i>Moderators:</i> Ceri Battle, PhD; Melissa Webb, B.Physio, M.Hlth Sci; Jeff D. Winter, DPT
4:30 PM	Transitions #2 Mary Langcake, FRACS, FACS
4:45 PM	Review of day
5:00 PM	ADJOURN
5:15 PM – 6:45 PM	CWISociety Business Meeting and Happy Hour Open to all members and prospective members

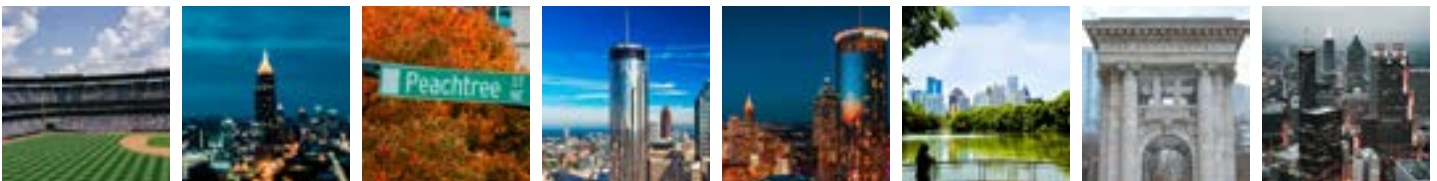
FRIDAY APRIL 25

6:30 AM	BREAKFAST AND REGISTRATION
6:50 AM	Welcome Babak Sarani, MD, FACS, FCCM
	Scientific Session #1 <i>Moderators:</i> Sean Dieffenbauger, MD, FACS; Ledford Powell, MD, FACS, FCCP, MBA
7:00 AM	Addition of True-Blue Imaging Technique on Chondral Assessment of the Chest Wall Versus 2DCT and 3DCT Reconstruction <i>Presenter:</i> Alejandra Huaco, MD; <i>Discussant:</i> Raul Coimbra, MD, PhD, FACS
7:12 AM	Development and Preliminary Validation of a Novel Chest Wall Injury Specific Quality of Life Instrument: C-QoL <i>Presenter:</i> Esther M.M. Van Lieshout, PhD, MSc; <i>Discussant:</i> Brian D. Kim, MD, FACS
7:24 AM	Impact of Obesity on Outcomes of Surgical Stabilization of Rib Fractures <i>Presenter:</i> Negaar Aryan, MD; <i>Discussant:</i> Jordan M. Kirsch, DO
7:36 AM	Repair of One or Two Rib Fractures (ROOT1): A Chest Injury International Database study <i>Presenter:</i> Francis Speranza, MD; <i>Discussant:</i> Scott Zakaluzny, MD
7:48 AM	Surgical Stabilization of Rib Fractures in Geriatric and Super Geriatric Trauma Patients with Flail Chest: Is age just a number? <i>Presenter:</i> Francisco Castillo Diaz, MD; <i>Discussant:</i> Jennifer M. Brewer, MD
8:00 AM	Physiotherapy Follow-Up Services for Patients with Blunt Chest Wall Trauma: An international survey study <i>Presenter:</i> Ceri Battle, PhD; <i>Discussant:</i> Alicia Privette, MD, FACS
8:12 AM	Disruption Junction: A Chest Wall Injury Society survey on costal margin rupture, intercostal, diaphragmatic and abdominal wall hernia diagnosis and management <i>Presenter:</i> Mark A. Kryskow, DO, FACS; <i>Discussant:</i> Ian Hunt, BSc (Hons), MBBS, MRCS, FRCS (CTh)
8:24 AM	BREAK
	Scientific Session #2 <i>Moderators:</i> Fredric M. Pieracci, MD, MPH, FACS and Feroze Sidhwa, MD, MPH, FACS
8:30 AM	Lost Fractures: Prevalence and risk factors for costosternal and costal margin fractures <i>Presenter:</i> Joseph D. Forrester, MD, MSc, FAWM, FACS; <i>Discussant:</i> Kristen T. Carter, MD
8:42 AM	Anatomy of the Intercostal Nerves of Ribs in the Lower Rib Cage <i>Presenter:</i> Arjun N. Patel, MD; <i>Discussant:</i> Ronald I. Gross, MD, FACS
8:54 AM	Epidemiology, Treatment, and Outcomes of Rib Fractures in Older Adults: A retrospective multi-institutional study <i>Presenter:</i> Bhavik Patel, FRACS, FACS; <i>Discussant:</i> Kristy Hawley, MD, MPH
9:06 AM	Measurement Properties of Pulmonary Function Measurement and Patient-Reported Outcome Measures in Patients with Multiple Rib Fracture Without Flail Segment: Validation Study Alongside the Multicenter FixCon trial <i>Presenter:</i> Esther M.M. Van Lieshout, PhD, MSc; <i>Discussant:</i> Jacob Hessey, MD
9:18 AM	Rethinking Rib Fixation: Is Non-operative Management a Safer Alternative for Frail Geriatric Patients? <i>Presenter:</i> Riddhi Mehta, MBBS; <i>Discussant:</i> Bradley W. Thomas, MD, FACS
9:30 AM	The Impact of Racial and Socioeconomic Disparities on the Utilization of Surgical Stabilization for Rib Fractures <i>Presenter:</i> Manuel Castillo-Angeles, MD, MPH; <i>Discussant:</i> Christine Castater, MD, MBA
9:42 AM	A Deep Learning Based Approach to Automated Rib Fracture Detection and CWIS Classification <i>Presenter:</i> Mathieu M.E. Wijffels MD, PhD; <i>Discussant:</i> Christopher Wolff, MD
9:45 AM	BREAK

FRIDAY APRIL 25 CONT'D

	Scientific Session #3 <i>Moderators:</i> Carrie A. Valdez, MD and D. Benjamin Christie, III, MD, FACS
10:15 AM	Cost-Benefit Analysis of Rib Fixation for Multiple Rib Fractures in U.S. Trauma Patients <i>Presenter:</i> Joshua Parreco, MD, FACS; <i>Discussant:</i> Dale Butler, MD MBA, FACS
10:27 AM	Evacuation of Hemothorax During SSRF: Does the technique influence the outcome? <i>Presenter:</i> David Sutori, MD; <i>Discussant:</i> Amy K. Whitson, MD
10:39 AM	Examining Disparities in the Surgical Stabilization of Rib Fractures <i>Presenter:</i> Jamie Ashe, MD; <i>Discussant:</i> Julio Trostchansky, MD, FACS
10:51 AM	Return to Work after Surgical Stabilization of Multiple Rib Fractures <i>Presenter:</i> Mauricio Velasquez-Galvis, MD, MSc, FACS; <i>Discussant:</i> Hason Khan, MD
11:03 AM	Surgical Stabilization of Rib Fractures in Polytrauma: A Potential Indication <i>Presenter:</i> Mary Katherine Matecki, MD; <i>Discussant:</i> Benjamin Wei, MD
11:15 AM	Clamshell Thoracotomy Closure Using Plates and Screws: A new look for a challenging exposure <i>Presenter:</i> Quentin McIlvaine, MD; <i>Discussant:</i> Daniel L. Miller, MD
11:27 AM	Rib Fracture Patterns and Concomitant Intrathoracic Injuries Following Blunt Chest Trauma <i>Presenter:</i> Philipp Jawny, MD; <i>Discussant:</i> Frank Z. Zhao, MD, FACS
11:39 AM	BREAK
	Scientific Session #4 <i>Moderators:</i> Stefan Schulz-Drost, MD, PhD, FEBS and Cecilia Benz, MD
11:54 AM	Descriptive Characteristics of Rib Fractures and Intraoperative Intercostal Nerve Findings in Patients with NCS/EMG Diagnosed Intercostal Nerve Injury: A Case Series <i>Presenter:</i> Matthew C. Sherrier, MD; <i>Discussant:</i> James A. Zebley, MD
12:06 PM	Sex-Based Differences in Surgical Stabilization Outcomes for Rib Fractures in Blunt Trauma Patients <i>Presenter:</i> Negaar Aryan, MD; <i>Discussant:</i> Joseph Sucher, MD, FACS
12:18 PM	Plasminogen Supplementation Improves Lysis of Inflammatory Retained Traumatic Hemothorax <i>Presenter:</i> Elizabeth Maginot, MD; <i>Discussant:</i> Crystal Zhang, MD, MPH
12:30 PM	Same Weight, Different Fate: Surgical Stabilization of Rib Fractures vs Non-Operative Management Across BMI Categories in Trauma Patients <i>Presenter:</i> Mohammad Al Ma'ani, MD; <i>Discussant:</i> Isaac Howley, MD, MPH, FACS
12:48 PM	Osteopathic Manipulative Treatment for Trauma as Adjunct for Pain and Mobility Limitations after Chest Wall Injury <i>Presenter:</i> Nancy Lopez; <i>Discussant:</i> Scott C. Gardner, PA-C
1:00 PM	Thoracoscopic versus Open Surgical Stabilization of Rib Fractures - A Propensity Score Matched Analysis <i>Presenter:</i> Rishwanth Vetri, MBBS; <i>Discussant:</i> Ashley J. Jones, MD, FACS
1:12 PM	ADJOURN

SEE LAST PAGE FOR
FRIDAY AFTERNOON ACTIVITY OPTIONS



SATURDAY APRIL 26

7:30 AM	BREAKFAST AND REGISTRATION
8:00 AM	Welcome Evert A. Eriksson, MD, FACS, FCCM, FCCP
8:05 AM	Presidential Address Babak Sarani, MD, FACS, FCCM <i>Introduction:</i> Michal Radomski, MD, MS, FACS
9:00 AM	Frankenplating - where are they now? <i>Moderator:</i> Richard Lesperance, MD, FACS Bhavik Patel, FRACS, FACS; Mary Katherine Matecki, MD; Nicholas Koullas, DO; Patrick Greiffenstein, MD, FACS; Peter A. Cole, MD, FAOA
9:45 AM	Physiotherapy Protocol Status Update Ceri Battle, PhD
10:00 AM	Transitions #3 Amanda Waite, ACNP
10:15 AM	BREAK
10:45 AM	Interdisciplinary Follow-Up Clinic: What are the essentials? Kaushik Mukherjee, MD, MBA, MSCI, FACS; Natalie Mukherjee, DNP, AGACNP-BC; Jeff D. Winter, DPT; Dwayne Free, RRT, RCP
11:30 AM	CWIS Pioneer Award Presentation and Recipient Remarks
12:00 PM	LUNCH
1:00 PM	CWIS - KLS Martin Resident Research Fellowship in Chest Wall Injury Outcomes Award 2024 Research Project Review Stephen Bordes, MD & Katherine I. Foley, MD 2025 Research Award Presentation Jessica Xu, MD, MS
1:30 PM	CWIS (Less Than Perfect) Case Review <i>Moderators:</i> Bradley Faliks, MD and Kyle Schmitt, MD <i>Presenters:</i> Cecilia Benz, MD; Joseph D. Forrester, MD, MSc, FAWM, FACS; Peter A. Cole, MD, FAOA
2:30 PM	New Frontiers in Imaging of the Chest Wall Maaz (Ali) Abbasi, BSc(Hons), MBBS, MRCS(2006), FRCR
3:00 PM	BREAK
3:30 PM	Transitions #4 Jeremy Hsu, BPharm, MBBS (Hons), DCLinSurg, FRACS, FACS
3:45 PM	Awards Presentation CWISummit Program Committee
4:00 PM	Presidential Transfer Babak Sarani, MD, FACS, FCCM and Evert A. Eriksson, MD, FACS, FCCM, FCCP
4:15 PM	Closing Remarks Thomas W. White, MD, FACS, CNSC
4:30 PM	ADJOURN

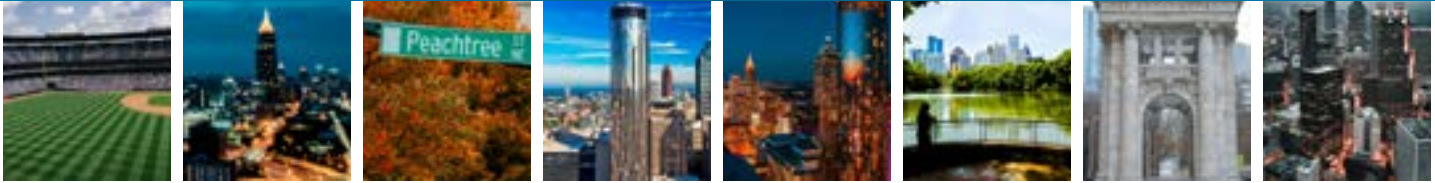
SCAN QR CODE TO
PURCHASE TICKETS



SATURDAY EVENING CELEBRATION

Join CWIS at our 2025 CWISummit Gala
6:00 - 9:00 PM
Twin Smokers BBQ in downtown Atlanta

Food, fun, music, and more!



FRIDAY AFTERNOON ACTIVITY OPTIONS

Atlanta's combination of history, culture, economic growth, and community makes it a vibrant and appealing place to live and visit. This afternoon is reserved for participants to select one of the "must-see" activities in this iconic American city!

Options noted to the right are all within walking distance of the Westin Peachtree Plaza.

Email CWIS for a list of additional options nearby the hotel including shopping, spas, food, and more!

WORLD OF COCA-COLA

<https://www.worldofcoca-cola.com/home>

COLLEGE FOOTBALL HALL OF FAME

<https://www.cfbhall.com/>

CENTENNIAL OLYMPIC PARK

<https://www.gwcca.org/centennial-olympic-park>

CHILDREN'S MUSEUM OF ATLANTA

<https://childrensmuseumatlanta.org/>

MERCEDES-BENZ STADIUM (tours)

<https://www.mercedesbenzstadium.com/stadium-tours>

JIMMY CARTER PRESIDENTIAL LIBRARY AND MUSEUM

<https://www.jimmycarterlibrary.gov/>

CURRENT AND UPCOMING CWIS RESEARCH OPPORTUNITIES

Interested in collaborative research regarding chest wall injury? CWIS has multiple current and upcoming opportunities to partner with members on projects and data collection as we work together toward our mission of "optimizing the operative and non-operative care of the patient with chest wall injury."

Less Than Perfect Outcomes (CWIS LTP)

CWIS LTP will evaluate the cause(s) of hardware failure after SSRF/SSSF through the perspective of the operative surgeon(s). The secondary aims are to classify failure types and to evaluate the impact of the failure event on the reporting surgeon(s). It is a qualitative study utilizing semi-structured interviews with chest wall surgeons who report patients experiencing hardware failure (within six months). Please contact CWIS as soon as you become aware one of your patients has suffered a "less than perfect" outcome to schedule an interview with one of our trained interviewers.

CWIS Length of Stay Delphi Project (CWIS LOS)

We will be launching a new Delphi survey project in May, which will include three rounds of surveys sent to all surgeon members of CWIS - focused specifically on factors related to hospital inpatient length of stay for patients suffering from chest wall injury. The purpose of the study is to assess the relevancy of length of stay as a patient outcome for surgical stabilization of rib fixation.

CWIS Chest Quality of Life project (CQoL)

CWIS will be launching a membership-wide project designed to collect data on the implementation of our new quality of life instrument. This instrument will be presented at the 2025 CWISummit so watch for more details on Science Friday.

The **Chest Wall Injury Society Rib Fracture Evaluation of Long-term Impact on Experience and Function with Rib Stabilization (CWIS RELIEF-RIB) Trial** We are actively seeking sites now for this project - which is in collaboration with CNTR as we apply for a PCORI grant. The purpose is to evaluate the effectiveness of SSRF plus multimodal pain management versus multimodal pain management alone (non-operative) in patients with three or more displaced rib fractures with no physiologic flail chest. The trial is planned for 10-12 sites with a total enrollment of 615 patients and includes five years of funding.

Costal Margin Registry (CWIS CoMaR)

Are you willing to submit data to help us describe injury patterns associated with Costal Margin Rupture (CMR)? This includes CMR with Intercostal Hernia (IH) and Traumatic Diaphragmatic Intercostal Hernia (TDIH), both retrospective and prospective data collection.

CWIS Chest Injury International Database (CWIS CIID)

Chest Injury International Database (CIID) is a HIPAA-compliant cloud-based data repository for the members of CWIS to support our international research efforts. It has been designed by thought-leaders from within the society and is the largest and most granular collection of chest wall patients currently in existence.

If you are interested in any (or all) of the above mentioned items, please email the Chest Wall Injury Society via information@cwisociety.org and include the name(s) of the items you would like to discuss. You will receive prompt follow-up with next steps for involvement.



Follow us on social media and share your thoughts using #CWISummit2025.

[f](#) [t](#) [@CWISociety](#) | [cwis.slack.com](https://www.cwis.slack.com) | internationalribforum.slack.com